

## KFSU (923 021)

- For indirect connection / earthing of functionally isolated installation parts under lightning conditions
- For lightning equipotential bonding according to IEC 62305
- For installation in buildings, outdoor locations and damp rooms as well as for underground installation

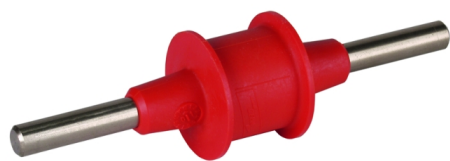
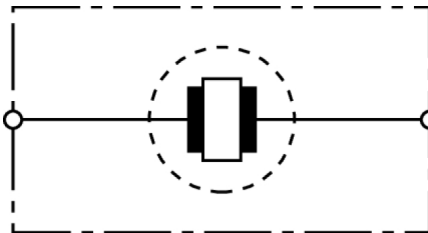
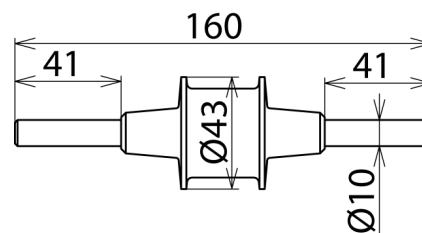


Figure without obligation



Basic circuit diagram KFSU



Dimension drawing KFSU

Isolating spark gaps with plastic sheath and two stainless steel connections (Rd 10 mm).

Type	KFSU
<b>Part No.</b>	<b>923 021</b>
Isolating spark gap according to EN 62561-3 / IEC 62561-3	yes
Rated power-frequency withstand voltage (50 / 60 Hz) ( $U_{wac}$ )	300 V
Rated impulse sparkover voltage ( $U_{f,imp}$ )	≤ 4 kV
Operating temperature range ( $T_U$ )	-20 °C ... +80 °C
Degree of protection protection	IP 65
Length	160 mm
Enclosure diameter	43 mm
Enclosure material	steel / plastic coating
Connection	Rd 10 mm
Material (connection)	stainless steel (V2A)
Extended technical data:	-----
- Nominal discharge current (8/20 μs) ( $I_n$ )	100 kA
- Power frequency sparkover voltage (50 / 60 Hz) ( $U_{aw}$ )	≤ 2.5 kV
Weight	185 g
Customs tariff number	85369095
GTIN	4013364036161
PU	1 Stk

We reserve the right to introduce changes in performance, configuration and technology, dimensions, weights and materials in the course of technical progress. The figures are shown without obligation.