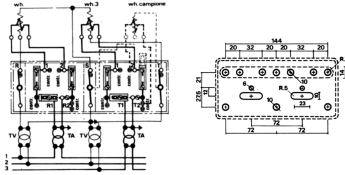
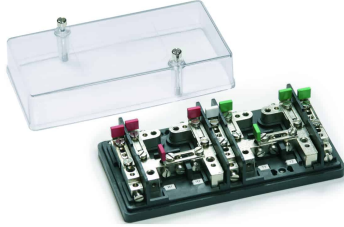
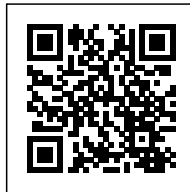


2-phase  
control terminal board, white color, rear-entry connection



<b>Series</b>	MCM
<b>Code</b>	MC202B
<b>Type</b>	MCM.2/B
<b>HS code</b>	85369010
<b>Colour</b>	White
<b>TECHNICAL FEATURES</b>	
<b>Function/Type</b>	Sectioning and measurement
<b>Rated cross-section</b>	6 mm <sup>2</sup>
<b>Rated cross-section</b>	
<b>Connecting capacity</b>	
<b>Flexible wire</b>	0.5-6 mm <sup>2</sup>
<b>Rigid wire</b>	0.5-6 mm <sup>2</sup>
<b>Electrical characteristics according to IEC EN standard</b>	
<b>Maximum voltage AC/DC</b>	500 V
<b>Maximum current (rated cross-section)</b>	57 A
<b>Protection degree</b>	IP20
<b>Rated impulse withstand voltage / pollution degree</b>	6 kV / 3
<b>Insulation stripping length</b>	-
<b>Tightening torque value (nom. / max.)</b>	1.2 Nm
<b>Dimension</b>	85x170x48 mm (AxBxH)
<b>Plastic material</b>	Kelon UL94V-0
<b>ACCESSORIES</b>	
<b>Protection cover</b>	MCM.2/CO (cod. MC002) (1)
<b>APPROVALS AND MARKINGS</b>	



\* For meters with ARON insertion\* Cable entry from the rear side with 4,1 mm hole\* Transparent front cover  
1 (1) The cover is already included in the terminal board, this article is to be considered as a spare in case of need

## DESCRIZIONE DEL PRODOTTO

MCM.2/B 2-phase control terminal board, white color, rear-entry connection