

# Product Data Sheet

## GW68536

68 ACS Range



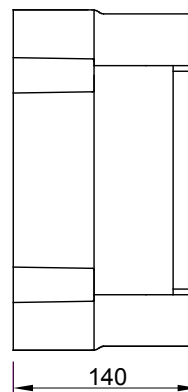
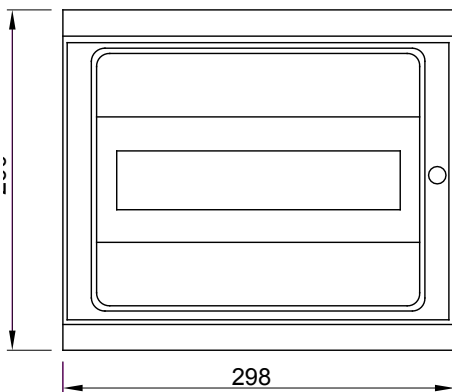
The main supply boards for the construction site type 68 QP ACS and 68 CDK ACSK: installed immediately downstream from the energy meter, to protect the line from the delivery board to the main site distribution board. They are available in versions with power from 17 kW (32A) to 130 kW (250A), all fitted with an emergency push-button.

Type	CDK ACS	board type	Wired
Colour	Grey RAL 7035	Outer dim. LxHxD (mm)	298x260x140
Weight (kg)	4	Accordance with Standards	EN 61439-4 (ACS)
Characteristics	UV resistance (EN 62208)	IP degree	IP65
Mechanical resistance	IK09	Glow wire test	650 °C
Thermo-pressure with ball	70 °C	Insulation class	II
No. of poles	4	Power suppliable (kW)	17
Mains switch	MCB 32A 4P 6kA	MCB'S MT main RCCB	RCBO 32 A
Emergency push-button	Yes	Electrocod	139

### BEHAVIOUR WITH CHEMICAL AND ATMOSPHERIC AGENTS

Saline solution	Acids		Bases		Solvents				Mineral oil	UV rays
	Concentrated	Diluted	Concentrated	Diluted	Hexane	Benzol	Acetone	Alcohol		
Resistant	Not resistant	Limited resistance	Not resistant	Limited resistance	Limited resistance	Not resistant	Not resistant	Limited resistance	Limited resistance	Limited resistance

### DIMENSIONAL



### TECHNICAL SYMBOLOGY



### STANDARDS/APPROVALS

