

Product End-of-Life Instructions

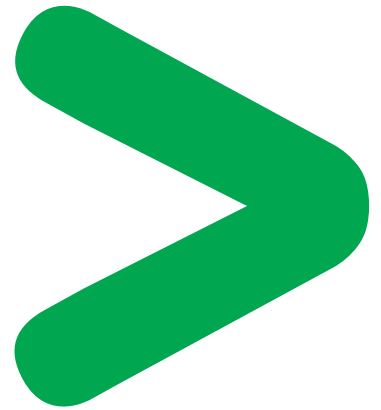
Magelis GT 12" & 15"

Product Range

Magelis GT 12" & 15"

Marketing Model

XBTGT6330, XBTGT6340, XBTGT7340



Size in mm:

H x L x D : 239 x 313 x 56

Weight (excluding packaging) in g:

2919

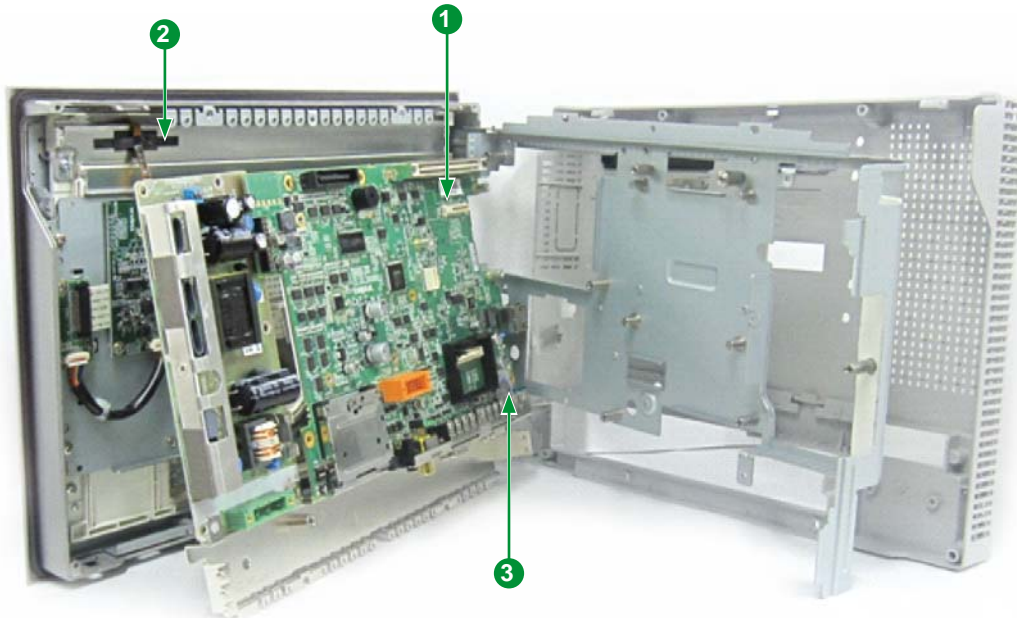


Operations recommended for the end of life treatment

There are several steps to process the products at the end of life so as to recover components, materials or energy :

Reuse ⇒ Separation for special treatment ⇒ Other Dismantling ⇒ Shredding

The components of the products that optimize the recycling performances are listed, identified and located hereunder.



Recommendation	Number on drawing	Components	Weight (g)	Comment
Special treatment (Components listed for depollution)	1	PCBA	491	–
	2	LCA	750	–
	3	Battery	1.6	–

Schneider Electric Industries SAS

35, rue Joseph Monier
CS30323
F - 92506 Rueil Malmaison Cedex

RCS Nanterre 954 503 439
Capital social 896 313 776 €
www.schneider-electric.com

The version of the Guide used to create the document: End of Life Instruction Drafting Guide of Schneider Electric version V2.

Publication : Schneider Electric