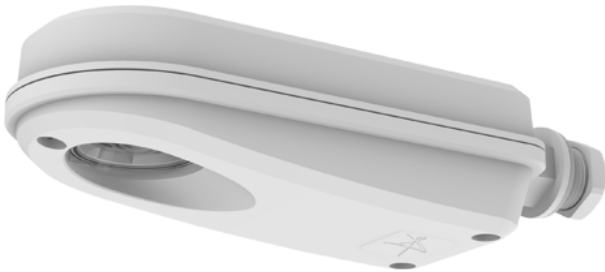




AEMBLEMED

IP65 Emergency Bolt-On



IP65 Bolt on emergency allows you to add emergency lighting at any time.

Easy to install to any non-corrosive or batten via M20 gland

LiFePO4 Lithium battery provides improved energy consumption, product reliability and lifetime

Self-test switchable

Tri-colour LED shows green for healthy running condition, red/flashing for fault conditions and white for emergency operation

Supplied with open area and escape route interchangeable lenses

Technical Specifications:

Light Source | LED

Colour / Finish | [White]

Emergency | Yes

Self Test | Yes

IP Rating | IP65

Class Protection | 2

Internal / External | Internal

Warranty (Years) | 5

Battery Warranty | 5

CE Mark | Yes

UKCA Mark | Yes

Length | 190

Width | 70

Height | 45.5

Wattage | 2W

Lumens Delivered | 248lm(OA) / 248lm(ER)

Beam Angle | 120

CCT | 6500K

Input | 220/240V

Operating Temp | 5°C - 40°C

Battery Specification | 3.2V 3400mAh LiFePO4

Battery Type | Li-Ion

Technical Data - ETIM - Emergency unit for luminaire (EC000471)

Nominal voltage	220-240 V
Power	1.5 W
Monitoring equipment	Automatic self test
Protection class	II

Datasheet generated from <https://onetimepim.com> last updated Friday, February 16, 2024 7:27:55 PM

