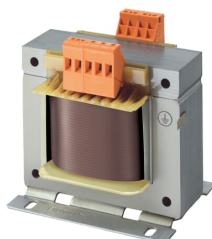


PRODUCT-DETAILS

TM-I 2000/115-230 P

TM-I 2000/115-230 P Single phase control and isolating transformer



General Information

| | |
|-----------------------|--|
| Extended Product Type | TM-I 2000/115-230 P |
| Product ID | 2CSM204383R0801 |
| EAN | 8012542043836 |
| Catalog Description | TM-I 2000/115-230 P Single phase control and isolating transformer |
| Long Description | Transformer in which the primary and secondary windings are electrically separated by a double or reinforced insulation. |

Technical

| | |
|--|---|
| Standards | EN 61558-2-2, EN 61558-2-4 , UL 506 , CSA C22-2-N66 |
| Rated Insulation Voltage (U _i) | 4.8 kV |
| Primary Voltage | 230-400 ±15 V AC |
| Secondary Voltage | 115-230 V AC |
| Rated Frequency (f) | 50/60 Hz |
| Power Loss | 85 W |
| Power Supply | 2000 V·A |
| Insulation Class | F |
| Fuse Type | aM |
| Material of Conductor | Copper |
| Cable Cross-Section | 6 mm ² |

Environmental

| | |
|---|-----------------------------------|
| Ambient Temperature | max. 40 °C |
| RoHS Status | Following EU Directive 2011/65/EU |
| RoHS Information | 9AKK106713A5641 |
| REACH Declaration | 9AKK108467A9482 |
| Environmental Information | See RoHS Information |
| Conflict Minerals Reporting Template (CMRT) | 9AKK108468A3363 |

Dimensions

| | |
|----------------------------|-----------|
| Product Net Width | 200 mm |
| Product Net Height | 0.181 m |
| Product Net Depth / Length | 230 mm |
| Product Net Weight | 25.500 kg |

Ordering

| | |
|------------------------------|-------------|
| Minimum Order Quantity | 1 piece |
| Package Level 1 Units | box 1 piece |
| Package Level 1 Gross Weight | 25.5 kg |

Certificates and Declarations

| | |
|--------------------------------|-----------------|
| Certification Agency | UR, CSA |
| Declaration of Conformity - CE | 9AKK106713A5641 |
| UL Certificate | 9AKK108467A9066 |

Installation

| | |
|--------------------------|--------------------|
| Instructions and Manuals | No document needed |
| Wiring Diagram | 9AKK108466A7452 |

Popular Downloads

| | |
|--|-----------------|
| Data Sheet, Technical Information | 2CSC446005B0202 |
| Inrush Power Curve | 9AKK108467A2987 |
| Transformer Protection Selection Table | 9AKK108467A2982 |
| Power Draw According to Altitude | 9AKK108467A2983 |
| Power Draw According to Temperature | 9AKK108467A2985 |
| Admissible Overload | 9AKK108467A2986 |

Classifications

| | |
|--------|--|
| ETIM 8 | EC002486 - One-phase control transformer |
|--------|--|

| | |
|----------------------------|--|
| ETIM 9 | EC002486 - One-phase control transformer |
| WEEE Category | 5. Small Equipment (No External Dimension More Than 50 cm) |
| WEEE B2C / B2B | Business To Business |
| CN8 | 85043290 |
| eClass | V11.0 : 27031302 |
| Object Classification Code | T |

Categories

Low Voltage Products and Systems → Modular DIN Rail Products → Command and Signalling Devices → Industrial single-phase Transformers

