



# MASTER LEDtube Mains T5



## MAS LEDtube 900mm HO 18.5W 865 T5

The new Philips Master LEDtube Mains T5 brings simplicity to your lighting project. You don't need to pay attention to the driver technology anymore. Thanks to a unique design, Philips MASTER LEDtube Mains T5 installs in luminaires operating on mains power connection. So simple to operate! . Perfectly safe, reliable & easy to install Philips MASTER LEDtube Mains T5 is the ideal alternative to standard fluorescent tubes to maximize value over lifetime with high energy saving and lower maintenance costs.

### Product data

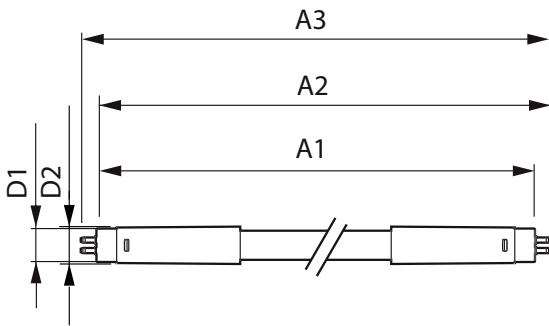
General Information		LLMF At End Of Nominal Lifetime (Nom)	
Cap-Base	G5 [G5]		70 %
Nominal lifetime	50,000 hour(s)	Flickering value (PstLM)	1
Switching Cycle	200,000	Stroboscopic effect value (SVM)	0.4
Lighting Technology	LED	Photobiological safety according to EN 62471 RGO	
Flux measurement reference	Sphere	Operating and Electrical	
CE mark	Yes	Input Frequency	50 to 60 Hz
EU RoHS compliant	Yes	Power Consumption	18.5 W
		Lamp Current (Nom)	93 mA
		Wattage Equivalent	39 W
		Starting Time (Nom)	0.5 s
		Warm-up time to 60% light	0.5 s
		Power Factor (Fraction)	0.92
		Voltage (Nom)	220-240 V
		LED alternative to fluorescent lamp power	39 W
Light Technical		Temperature	
Color Code	865 [CCT of 6500K]	Ambient temperature range	-20 to +45 °C
Beam Angle (Nom)	200 degree(s)		
Luminous Flux	2,800 lumen		
Color Designation	Cool Daylight		
Correlated Color Temperature (Nom)	6500 K		
Luminous Efficacy (rated) (Nom)	151 lm/W		
Color Consistency	<6		
Color rendering index (CRI)	80		

# MASTER LEDtube Mains T5

T-Case Maximum (Nom)	60 °C
<b>Controls and Dimming</b>	
Dimmable	No
<b>Mechanical and Housing</b>	
Bulb Finish	Frosted
Bulb Material	Glass
Product Length	900 mm
Bulb Shape	Tube, double-ended
<b>Approval and Application</b>	
Energy Efficiency Class	D
Energy Saving Product	Yes
Approval Marks	RoHS compliance TUV CE marking KEMA Keur certificate

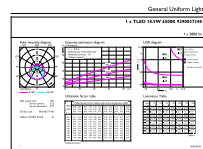
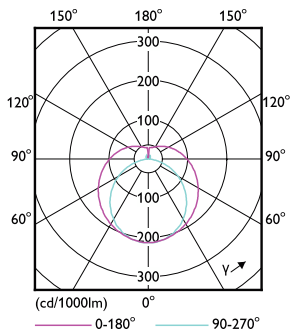
Energy Consumption kWh/1000 h	19 kWh
EPREL Registration Number	1590871
<b>Product Data</b>	
Full product code	872016927529400
Order product name	MAS LEDtube 900mm HO 18.5W 865 T5
Order code	929003734802
Numerator - Quantity Per Pack	1
Numerator - Packs per outer box	10
Material Nr. (12NC)	929003734802
Full product name	MAS LEDtube 900mm HO 18.5W 865 T5
EAN/UPC - Case	8720169275300
EAN/UPC - Product/Case	8720169275294

## Dimensional drawing



Product	D1	D2	A1	A2	A3
MAS LEDtube 900mm HO 18.5W 865 T5	19 mm	849 mm	856.1 mm	863.2 mm	

## Photometric data

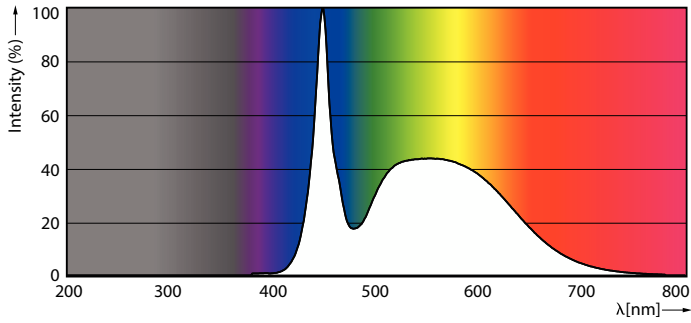


Light Distribution Diagram - MAS LEDtube 900mm HO 18.5W 865 T5

General uniform lighting - MAS LEDtube 900mm HO 18.5W 865 T5

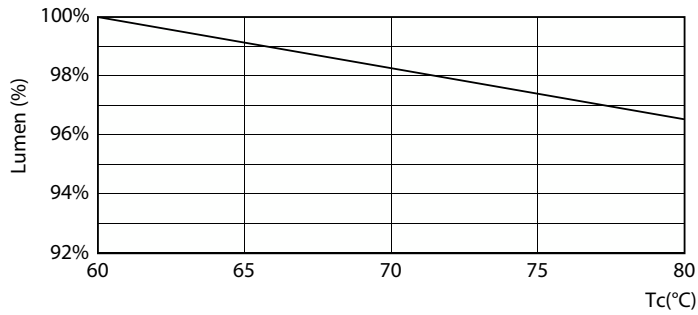
# MASTER LEDtube Mains T5

## Photometric data

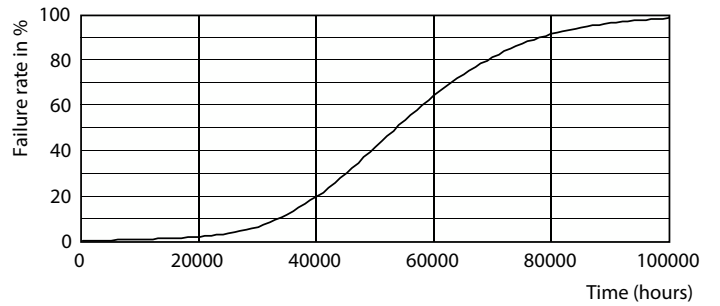


Spectral Power Distribution Colour - MAS LEDtube 900mm HO 18.5W 865 T5

## Lifetime



Lumen Maintenance Diagram - MAS LEDtube 900mm HO 18.5W 865 T5



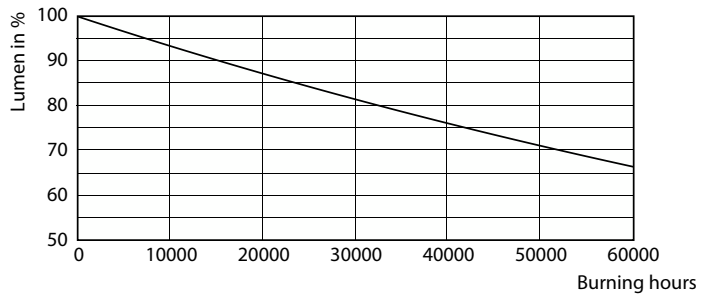
Life Expectancy Diagram - MAS LEDtube 900mm HO 18.5W 865 T5

Life Expectancy Diagram - MAS LEDtube 900mm HO 18.5W 865 T5

Life Expectancy Diagram - MAS LEDtube 900mm HO 18.5W 865 T5

# MASTER LEDtube Mains T5

## Lifetime



Lumen Maintenance Diagram - MAS LEDtube 900mm HO 18.5W 865 T5

