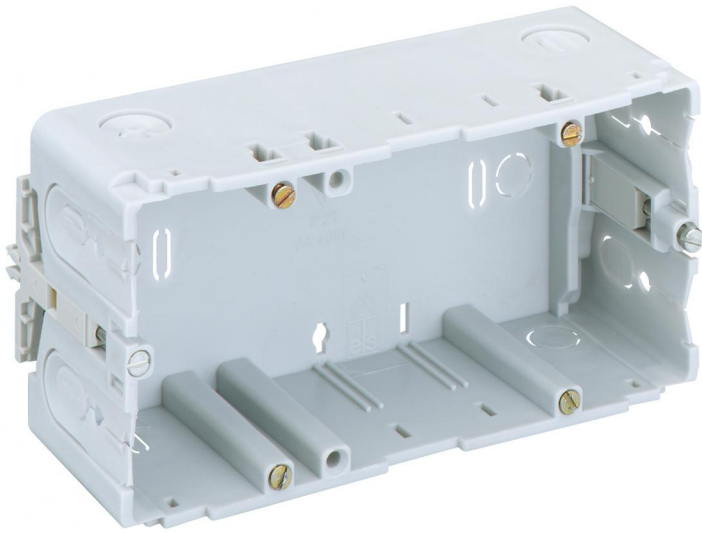


Channel installation box

KD 2 70/50 K3 ws



KD 2 70/50 K3 ws

Channel installation box

Productnumber: 38245001

Dimensions: 71 x 142 x 54 mm

Channel installation box, Rated insulation voltage:
400V AC, certified according to VDE (DIN EN
50085-1 (VDE 0604-1))

**2-way, for installation in Kleinhuis wall
trunking/device installation ducts**



Technical Data

electrical characteristics

Rated insulation voltage AC:	400 V
------------------------------	-------

Colours

Cover colour:	green
---------------	-------

Dimensions

Width:	71 mm
--------	-------

Length:	142 mm
---------	--------

Height:	54 mm
---------	-------

Material characteristics

Industry quality:	no
-------------------	----

Halogen free:	no
---------------	----

Ambient conditions

max. relative humidity 25°C:	100 %
------------------------------	-------

max. relative humidity 40°C:	50 %
------------------------------	------

Min. ambient temperature:	-25 °C
---------------------------	--------

Max. ambient temperature:	40 °C
---------------------------	-------

24h ambient temperature:	35 °C
--------------------------	-------

Material

Base unit material:	Polypropylene
---------------------	---------------

Cover material:	Polypropylene
-----------------	---------------

Certificates

Test mark:	VDE (DIN EN 50085-1 (VDE 0604-1))
------------	-----------------------------------
