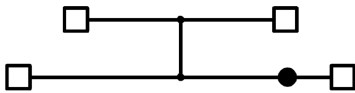
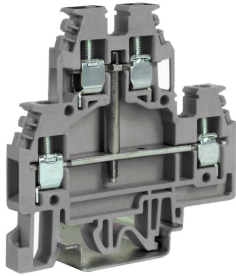
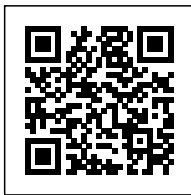


Screw terminal block 4mm<sup>2</sup>,  
2-levels interconnected, beige color



Series	DAS
Code	DS117
Type	DAS.4/CI
HS code	85369010
Colour	Beige
<b>TECHNICAL FEATURES</b>	
Function/Type	2 levels with internal connection
Rated cross-section	4 mm <sup>2</sup>
<b>Connecting capacity</b>	
Flexible wire	0.2-6 mm <sup>2</sup>
Rigid wire	0.2-6 mm <sup>2</sup>
Wire with ferrule - ferrule type	4 mm <sup>2</sup> - WP40/16
<b>Electrical characteristics according to IEC EN standard</b>	
Maximum voltage AC/DC	630 V
Maximum current (rated cross-section)	30 A
Caliber	A4
<b>Electrical characteristics according to UL Standard</b>	
Maximum voltage AC/DC	600 V
Maximum current (rated cross-section)	20 A
Section (min-max)	20-12 (AWG)
Tightening torque value (UL)	8.9 lb.in
<b>Electrical characteristics according to ATEX directive and IEC Ex standard</b>	
Maximum voltage AC/DC	-
Maximum current (rated cross-section)	-
Rated impulse withstand voltage / pollution degree	8 kV / 3
Insulation stripping length	9 mm
Tightening torque value (nom. / max.)	0.5 / 1.2 Nm
Width (pitch)	6 mm
Length	64 mm
Height mounted on TH35-7.5/TH35-15/G32	62 / 70 / 66 mm
Insulation material temperature index (EN 60216-1)	130 °C
Plastic material	Polyamide UL94V-0
<b>ACCESSORIES</b>	
<b>End section</b>	
Grey	DAS/PT/GR (cod. DS101GR)
Blue	DAS/PT (Ex)i (cod. DS201)
Beige	DAS/PT (cod. DS101)
Thickness	1.5 mm
<b>Cross-connection</b>	
Model A)	PM/.../... (cod. PM...)
Model B)	-
Rated current carrying capacity IEC/ATEX	30 A / -
Cross-connection identification strip	-
Internal removable cross-connection	DAS/VCE (cod. DS108)
Switchable cross-connection	POS/43 (cod. POS43)
Multiple cross-connection bar	PMP/58 (cod. PMP58)
Shunting screw and sleeve (Standard / Exe)	CPM/01 (cod. CPM01) - CPX/01 (cod. CPX01)
Protection cover	PRP/5 (cod. PRP05)
Coloured partition plate	DFU/7/R (cod. DU07R)
Cross-connection barrier	-
Test plug socket	SDD/1 (cod. DD001) - PSD/A (cod. PD001)
Modular test plug	-
End section for modular test plug	-
<b>Marking</b>	
Single marking tag	CNU/8/61 (cod. NU0861S)
Single marking tag for pitch insertion	CNU/8/61 (cod. NU0861S)
<b>End bracket</b>	
TH35 screw type	BT/3 (cod. BT003)
TH35 snap-fit type	BTO (cod. BT007)
TH35 and G32 snap-fit type	BTU (cod. BT005)
<b>Mounting rail</b>	
IEC 60715/TH35	PR/3/...
IEC 60715/G32	PR/DIN/...
<b>APPROVALS AND MARKINGS</b>	



1 For more details on accessories, refer to the relevant chapters

## DESCRIZIONE DEL PRODOTTO

DAS.4/CI Screw  
terminal block 4mm<sup>2</sup>, 2-levels interconnected, beige color