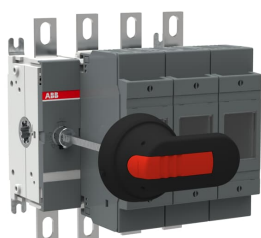


PRODUCT-DETAILS

OS200D03N3P

OS200D03N3P SWITCH FUSE



General Information

Extended Product Type	OS200D03N3P
Product ID	1SCA022749R8710
EAN	6417019243559
Catalog Description	OS200D03N3P SWITCH FUSE
Long Description	Switch Fuses,Front Operated,4-pole,03 (Left Side),DIN,0,Handle and shaft included,Detachable Neutral Link Integrated Into the Mechanism

Circular Value

Conflict Minerals Reporting Template (CMRT)	9AKK108467A5658
REACH Declaration	1SCC011021D0201
RoHS Information	1SCC011020D0201

Ordering

Minimum Order Quantity	1 piece
Customs Tariff Number	85365080
Country of Origin	Finland (FI)

Popular Downloads

Data Sheet, Technical Information	1SCC311013C0201
Instructions and Manuals	1SCC311012M0219

Dimensions

Product Net Width	177 mm
Product Net Height	199 mm
Product Net Depth / Length	191 mm
Product Net Weight	3.05 kg 6.72 lb

Technical

Rated Operational Current AC-21A (I_e)	(500 V) 200 A (690 V) 200 A
Rated Operational Current AC-22A (I_e)	(380 ... 415 V) 200 A (500 V) 200 A (690 V) 200 A
Rated Operational Current AC-23A (I_e)	(380 ... 415 V) 200 A (500 V) 200 A (690 V) 200 A
Rated Operational Power AC-23A (P_e)	(220 ... 240 V) 60 kW (400 V) 110 kW (415 V) 110 kW (500 V) 132 kW (690 V) 200 kW
Conventional Free-air Thermal Current (I_{th})	$\Theta = 40^\circ\text{C}$ 200 A
Conventional Thermal Current (I_{the})	Fully Enclosed 200 A
Rated Impulse Withstand Voltage (U_{imp})	12 kV
Rated Insulation Voltage (U_i)	1000 V
Rated Operational Voltage	Main Circuit 690 V AC
Rated Short-time Withstand Current Low Voltage (I_{cw})	for 1 s 8 kiloampere rms
Rated Conditional Short-Circuit Current (I_{nc})	(690 V) 80 kA
Power Loss	at Rated Operating Conditions per Pole 17 W
Pollution Degree	3
Handle Type	Pistol handle and shaft included
Fourth Pole Type	Detachable Neutral Link Integrated Into the Mechanism
Switches Operating Mechanism	03 (Left Side)
Position of Line Terminals	Top In - Bottom Out, Bottom In - Top Out
Fuse Size	NH0
Fuse System	DIN
Operating Mode	Front Operated
Standards	IEC 60947-3
Special Functions	Detachable Neutral
Mounting Type	Base mounting
Number of Poles	3

Terminal Type	Lug terminals
Terminal Width	20 mm
Tightening Torque	15 ... 22 N·m
Rated Current (I _n)	Main Circuit 200 A

Technical UL/CSA

Tightening Torque	15 ... 22 N·m
-------------------	---------------

Environmental

RoHS Status	Following EU Directive 2011/65/EU and Amendment 2015/863 July 22, 2019
-------------	--

Certificates and Declarations

CCC Certificate	CCC OS200-250 2016
Declaration of Conformity - CE	1SCC311091D2704
DNV GL Certificate	1SCC311123D0203
EAC Certificate	EAC OT_OTDC_OTL_OTP_OTR_OTU_OTE_OETL_OESA_OESC_OTM_OS_OS M_.pdf
REACH Declaration	1SCC011021D0201

Container Information

Package Level 1 Units	box 1 piece
Package Level 1 Width	210 mm 8.27 in
Package Level 1 Depth / Length	236 mm 9.29 in
Package Level 1 Height	163 mm 6.42 in
Package Level 1 Gross Weight	3.4 kg 7.5 lb
Package Level 1 EAN	6417019243559

Classifications

Object Classification Code	Q
ETIM 7	EC001040 - Fuse switch disconnecter
ETIM 8	EC001040 - Fuse switch disconnecter
ETIM 9	EC001040 - Fuse switch disconnecter
eClass	V11.1 : 27371401
WEEE Category	5. Small Equipment (No External Dimension More Than 50 cm)

Categories

Low Voltage Products and Systems → Switches → Switch Fuses

