

Junction box

## Abox 025/2-L/w

### Abox 025/2-L/w

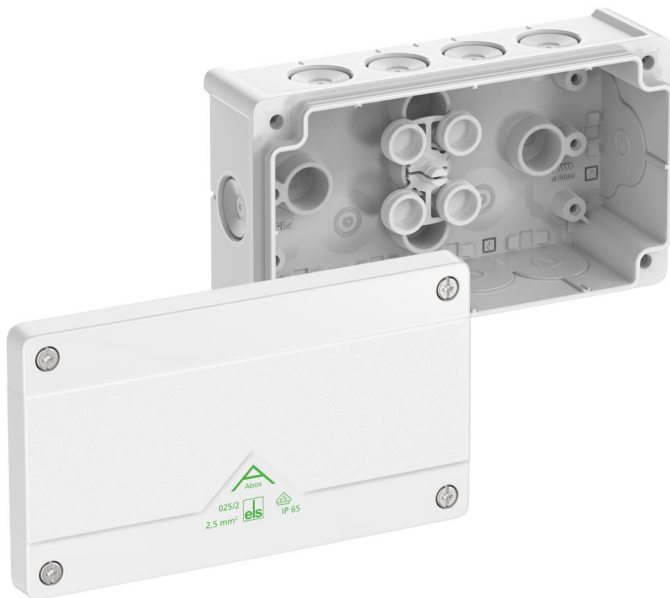
Junction box

Productnumber: 80210201

Dimensions: 152 x 87 x 52 mm

Junction box, protection class IP66, nominal cross-section 2.5 mm<sup>2</sup>, certified by VDE (DIN EN 60670-1/-22 (VDE 0606-1/-22)), DLG (Ammonia resistance), self-sealing, soft insertion membranes, M20, sealing range 4 - 16 mm, (2 rear, 10 side), internal fixing points, for standard indoor and protected outdoor installations

**white, Ui=1000 V AC, without terminals**



## Technical Data

### electrical characteristics

Rated insulation voltage AC:	1000 V
Rated insulation voltage DC:	1000 V
Max. conductor cross section:	2,5 mm <sup>2</sup>
Protection class:	II
Type of protection:	IP66
Terminal type:	none

### Colours

Base unit colour:	white
Cover colour:	white

### Dimensions

Width:	152 mm
Length:	87 mm
Height:	52 mm
Inner length:	75 mm
Inner width:	140 mm
Inner height:	36 mm
Weight:	0.16 kg

### Material characteristics

UV-resistant:	yes
Halogen free:	yes
Flammability class according with UL94:	HB
Glow-wire flammability according to EN 60695-2-11:	750 °C

### Max. number of terminals per cross section acc. to DIN VDE 0606-1

max. amount of terminals at 1,5 <sup>2</sup> :	10
max. amount of terminals at 2,5 <sup>2</sup> :	8

### <p>Max. number of wires per cross section acc. to DIN VDE 0606-1</p>

max. amount of wires at 1,5 <sup>2</sup> :	30
max. amount of wires at 2,5 <sup>2</sup> :	24

### mechanical properties

for sealing range min:	4 mm
for sealing range max:	16 mm
Impact strength:	IK07
Sealable:	yes
Cover screw torque:	1.2 Nm
Type of fastening:	Wall/ceiling mounting
Fastening:	internal fixing points

### Ambient conditions

max. relative humidity 25°C:	95 %
max. relative humidity 40°C:	50 %
Min. ambient temperature:	-25 °C
Max. ambient temperature:	55 °C
24h ambient temperature:	35 °C
Installation location:	protected outdoor areas

### Sales Information

EAN:	4013902663002
Packing Unit Code:	C62
ETIM Class:	EC002600
Custom tariff number:	85389099

## Material

Base unit material:	Polypropylene
Cover material:	Polypropylene
Entry material:	Thermoplastic elastomer
Sealing material:	Thermoplastic elastomer
Cover screw material:	Stainless steel V2A

## Certificates

Test mark:	VDE (DIN EN 60670-1/-22 (VDE 0606-1/-22))
Test mark:	DLG (Ammonia resistance)

## Accessories

[26012001 - DMS M20/w - Double-membrane seals](#)

[89500101 - Abox PST 025-100 - Sealing kit](#)

[89500201 - Abox TW 025/2 - Partition wall](#)

[89520301 - Abox 025/2 TS15 - Standard rail](#)

[89600201 - Abox 025/040 KH 2273 2,5<sup>2</sup> - Terminal holder](#)

[89600301 - Abox 025/040 KH 221 4<sup>2</sup> - Terminal holder](#)

[89640401 - Abox 025/040 KLS-2,5<sup>2</sup>/4<sup>2</sup> - Terminal block](#)

[89601001 - MABF 65-1 - Mast/pipe fixing set](#)

[89602001 - MABF 100-1 - Mast/pipe fixing set](#)

[89600901 - KTB 1 - Fastening parts kit](#)

## Cable gland

