

### TECHNISCHE DATEN:

#### Aufbau

Dichtring Fluorkautschuk FKM

#### Eigenschaften

- beständig gegen Chemikalien, Lösungsmittel und Öle

Temperaturbereich -20 °C / +200 °C

#### Hinweis

montierbar in den PERFECT Serien:  
50.6xx M, 50.6xx/xx M, 50.6xx M/V, 50.6xx M/EMV,  
50.6xx PAzzzz, 50.6xx PA/FLzzzz, 50.6xx PAzzzz/V,  
Temperaturbereich dort beachten!

### TECHNICAL DATA:

#### Configuration

Sealing ring Fluorine rubber FKM

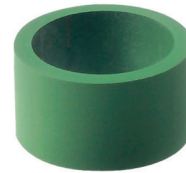
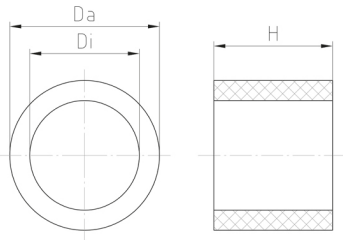
#### Properties

- resistant against chemicals, solvents and oil

Temperature range -20 °C / +200 °C


#### Comment

applicable in PERFECT series:  
50.6xx M, 50.6xx/xx M, 50.6xx M/V, 50.6xx M/EMV,  
50.6xx PAzzzz, 50.6xx PA/FLzzzz, 50.6xx PAzzzz/V,  
please pay attention to temperature range of  
cable glands!



### Merkmale

### Characteristics

Größe / Size xx	H mm	Da mm	Di mm		Art.-Nr. / Part No.
M12	6,5	8,2	6	100	WJ-DM 12-1V
M16	7,5	11,8	9	100	WJ-DM 16V
M20	7,5	15,5	13	100	WJ-DM 20V
M25	9	20	17	50	WJ-DM 25V
M32	12,5	25	21	25	WJ-DM 32V
M40	15	32,2	27	10	WJ-DM 40V