



# MASTER LEDtube Mains T5

## MAS LEDtube 1200mm HE 16.5W 830 T5 EU

The new Philips Master LEDtube Mains T5 brings simplicity to your lighting project. You don't need to pay attention to the driver technology anymore. Thanks to a unique design, Philips MASTER LEDtube Mains T5 installs in luminaires operating on mains power connection. So simple to operate! . Perfectly safe, reliable & easy to install Philips MASTER LEDtube Mains T5 is the ideal alternative to standard fluorescent tubes to maximize value over lifetime with high energy saving and lower maintenance costs.

### Product data

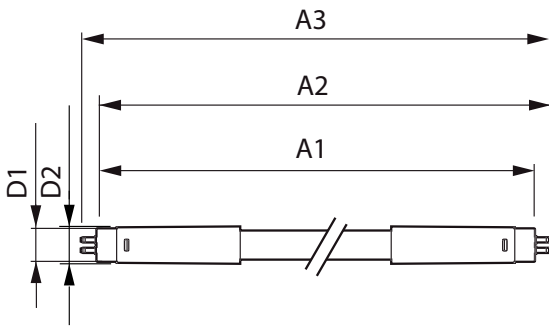
General Information		Operating and Electrical	
Cap-Base	G5 [G5]	Line Frequency	50 to 60 Hz
Nominal lifetime	50,000 hour(s)	Input Frequency	50 to 60 Hz
Switching Cycle	200,000	Power Consumption	16.5 W
Lighting Technology	LED	Lamp Current (Nom)	85 mA
Flux measurement reference	Sphere	Starting Time (Nom)	0.5 s
		Warm-up time to 60% light	0.5 s
		Power Factor (Fraction)	0.92
		Voltage (Nom)	220-240 V
Light Technical		Temperature	
Color Code	830 [CCT of 3000K]	Ambient temperature range	-20 °C to 45 °C
Beam Angle (Nom)	200 degree(s)	T-Case Maximum (Nom)	70 °C
Luminous Flux	2,300 lumen		
Color Designation	White (WH)	Controls and Dimming	
Correlated Color Temperature (Nom)	3000 K	Dimmable	No
Luminous Efficacy (rated) (Nom)	139.00 lm/W		
Color Consistency	<6		
Color rendering index (CRI)	80		
LLMF At End Of Nominal Lifetime (Nom)	70 %		

# MASTER LEDtube Mains T5

Mechanical and Housing	
Bulb Finish	Frosted
Bulb Material	Glass
Product Length	1,200 mm
Bulb Shape	Tube, double-ended
Approval and Application	
Energy Saving Product	Yes
Approval Marks	RoHS compliance CE marking KEMA Keur certificate
Energy Consumption kWh/1000 h	17 kWh
EPREL Registration Number	467,300
CE mark	Yes

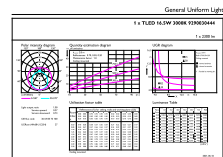
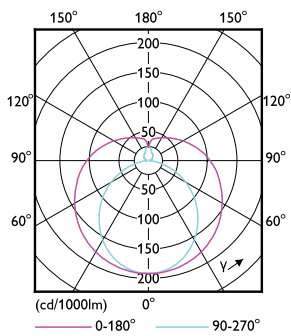
EU RoHS compliant	Yes
Product Data	
Full product code	871951433431100
Order product name	MAS LEDtube 1200mm HE 16.5W 830 T5 EU
Order code	929003044402
Numerator - Quantity Per Pack	1
Numerator - Packs per outer box	10
Material number (12NC)	929003044402
Full product name	MAS LEDtube 1200mm HE 16.5W 830 T5 EU
EAN/UPC - Case	8719514334328

## Dimensional drawing



Product	D1	D2	A1	A2	A3
MAS LEDtube 1200mm HE 16.5W 830 T5 EU	15.8 mm	19 mm	1,149 mm	1,156.1 mm	1,163.2 mm

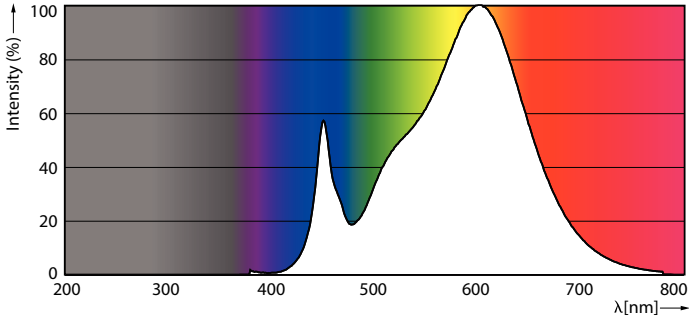
## Photometric data



Light Distribution Diagram - MAS LEDtube 1200mm HE 16.5W 830 T5 EU

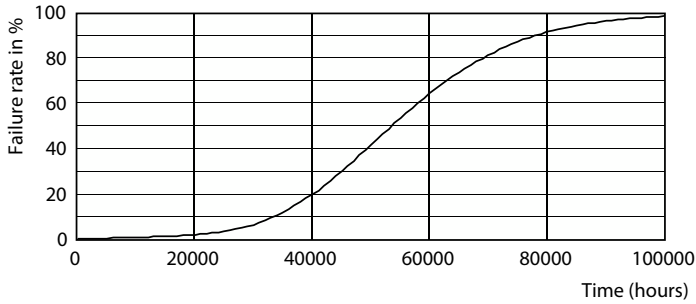
# MASTER LEDtube Mains T5

## Photometric data

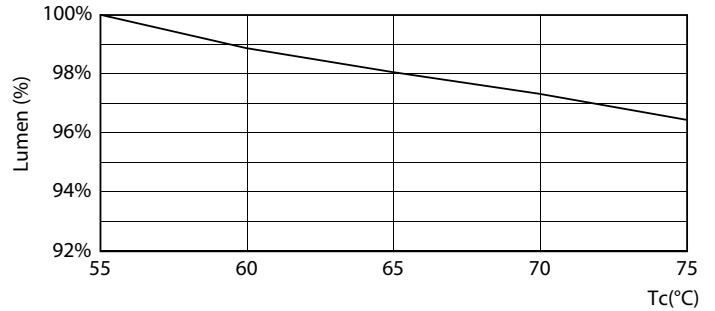


Spectral Power Distribution Colour - MAS LEDtube 1200mm HE 16.5W 830 T5 EU

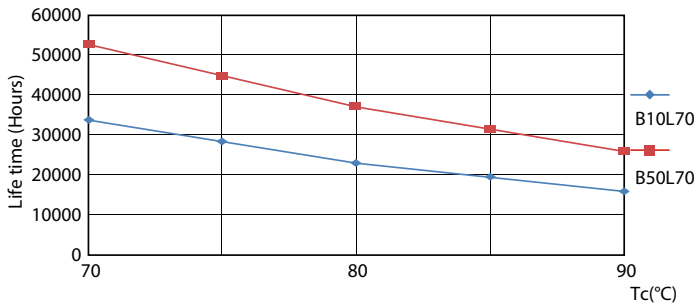
## Lifetime



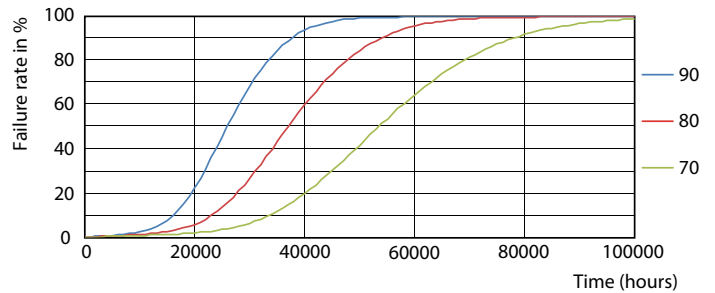
Life Expectancy Diagram - MAS LEDtube 1200mm HE 16.5W 830 T5 EU



Lumen Maintenance Diagram - MAS LEDtube 1200mm HE 16.5W 830 T5 EU



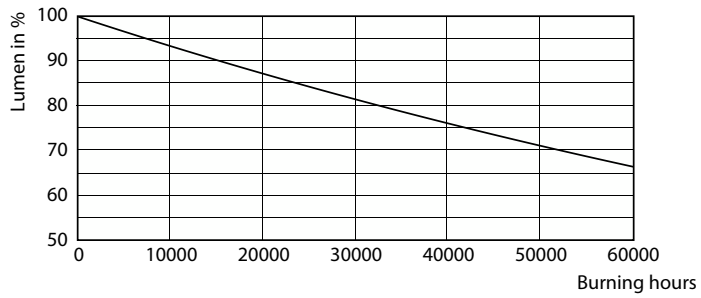
Life Expectancy Diagram - MAS LEDtube 1200mm HE 16.5W 830 T5 EU



Life Expectancy Diagram - MAS LEDtube 1200mm HE 16.5W 830 T5 EU

# MASTER LEDtube Mains T5

## Lifetime



Lumen Maintenance Diagram - MAS LEDtube 1200mm HE 16.5W 830 T5 EU

